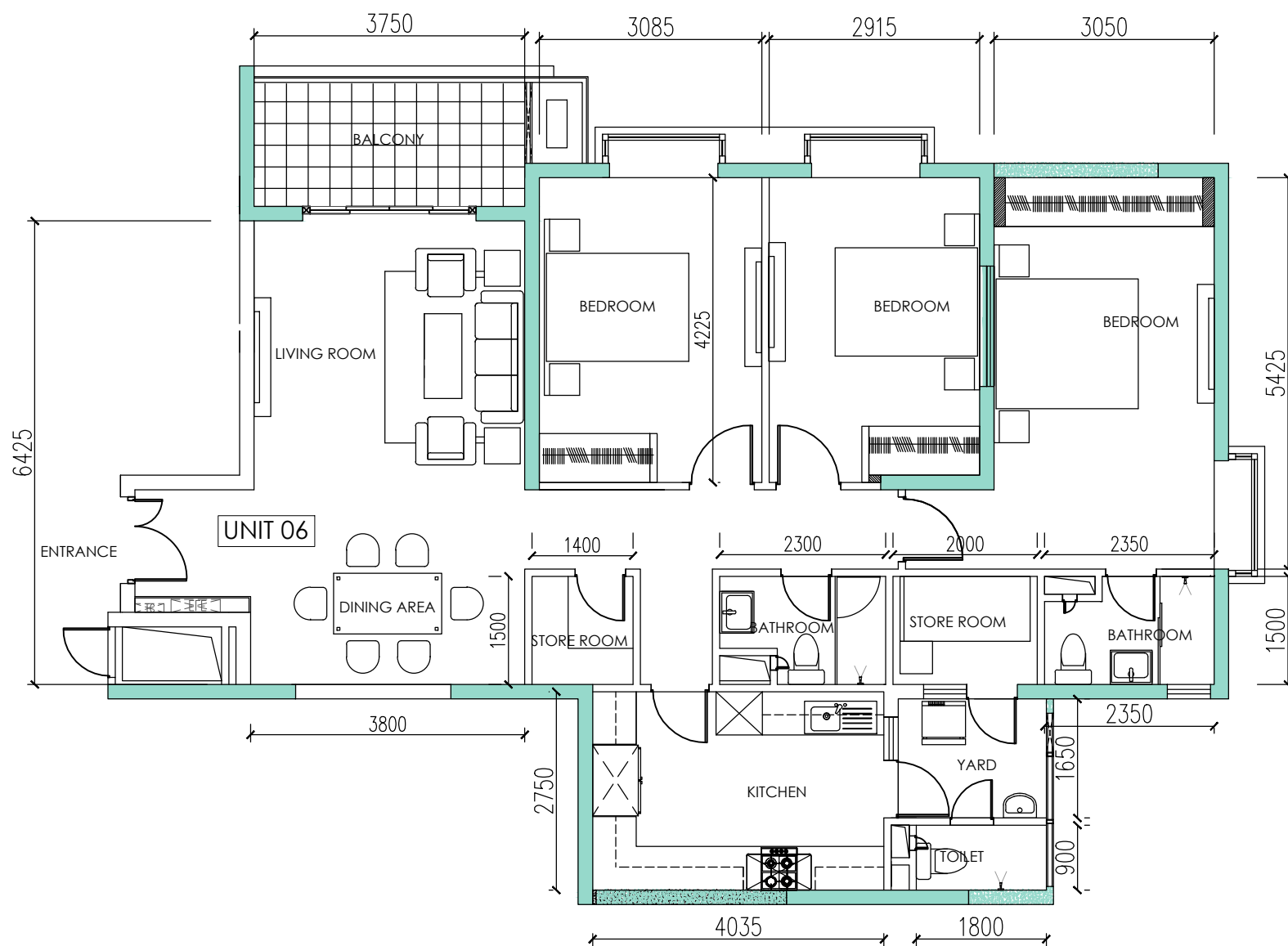
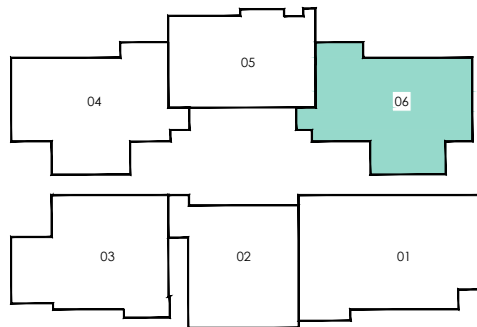
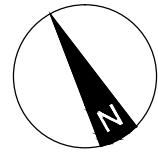


BLOCK F - MELFORD TOWER

LEVEL 05 - 21 - UNIT 06

03 BEDROOM

AREA: 124 Sqm (1335 Sqft)



NOTE:

ALL PLANS ARE SUBJECT TO AMENDMENTS AS APPROVED OR REQUIRED BY THE RELEVANT AUTHORITIES, AS WELL AS CHANGES NECESSITATED BY THE CONSULTANTS/ MEP ENGINEERS DEMANDS. STATED FLOOR AREAS ARE APPROXIMATE MEASUREMENTS ONLY, SUBJECT TO FINAL SURVEY AND DOES NOT DEMARCATATE THE LEGAL BOUNDARIES OF THE APARTMENT. DEPICTION OF FURNISHINGS ARE FOR REFERENCE ONLY.