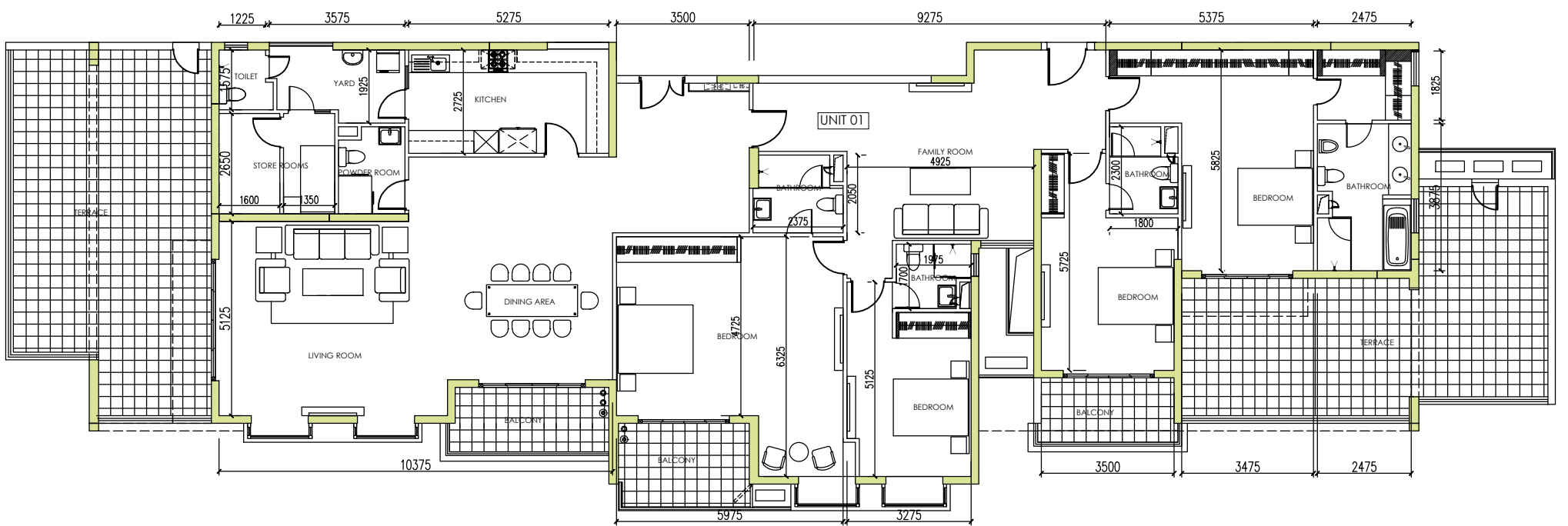
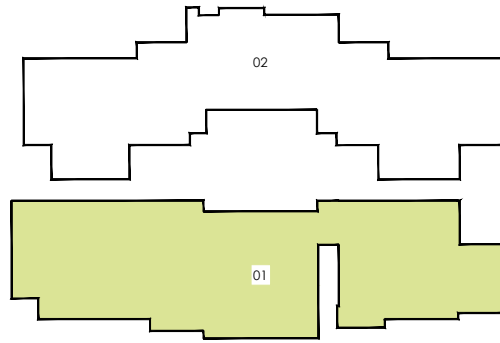
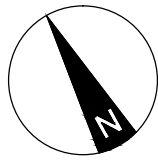


**BLOCK E - STRATFORD TOWER**  
**LEVEL 28 - UNIT 01**  
**04 BEDROOM**  
**BUILDING AREA: 297 Sqm (3197 Sqft)**  
**TERRACE AREA : 95 Sqm (1023 Sqft)**



**NOTE:**

ALL PLANS ARE SUBJECT TO AMENDMENTS AS APPROVED OR REQUIRED BY THE RELEVANT AUTHORITIES, AS WELL AS CHANGES NECESSITATED BY THE CONSULTANTS/ MEP ENGINEERS DEMANDS. STATED FLOOR AREAS ARE APPROXIMATE MEASUREMENTS ONLY, SUBJECT TO FINAL SURVEY AND DOES NOT DEMARCATTE THE LEGAL BOUNDARIES OF THE APARTMENT. DEPICTION OF FURNISHINGS ARE FOR REFERENCE ONLY.