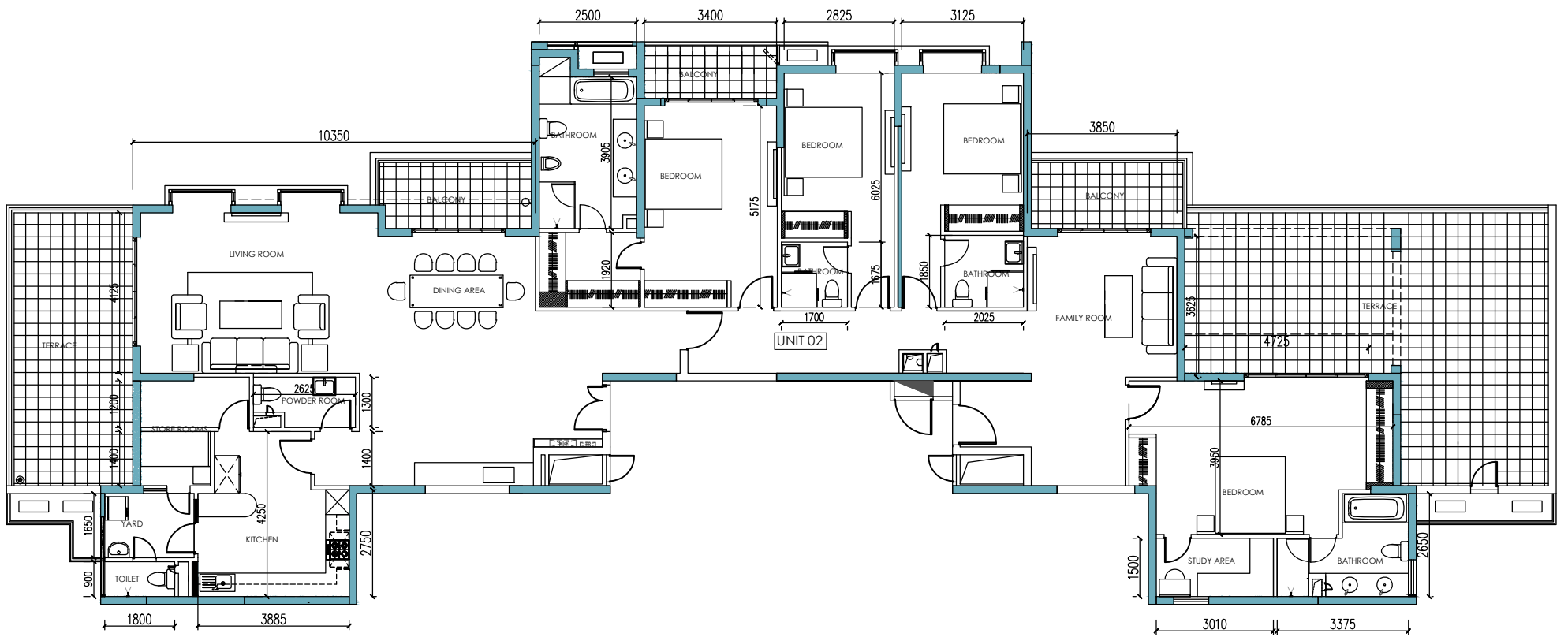
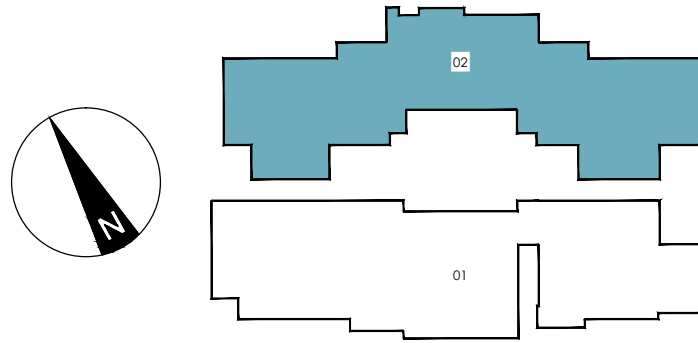


BLOCK E - STRATFORD TOWER
LEVEL 28 - UNIT 02
04 BEDROOM
BUILDING AREA: 277 Sqm (2982 Sqft)
TERRACE AREA : 76 Sqm (818 Sqft)



NOTE:

ALL PLANS ARE SUBJECT TO AMENDMENTS AS APPROVED OR REQUIRED BY THE RELEVANT AUTHORITIES, AS WELL AS CHANGES NECESSITATED BY THE CONSULTANTS/ MEP ENGINEERS DEMANDS. STATED FLOOR AREAS ARE APPROXIMATE MEASUREMENTS ONLY, SUBJECT TO FINAL SURVEY AND DOES NOT DEMARCATATE THE LEGAL BOUNDARIES OF THE APARTMENT. DEPICTION OF FURNISHINGS ARE FOR REFERENCE ONLY.