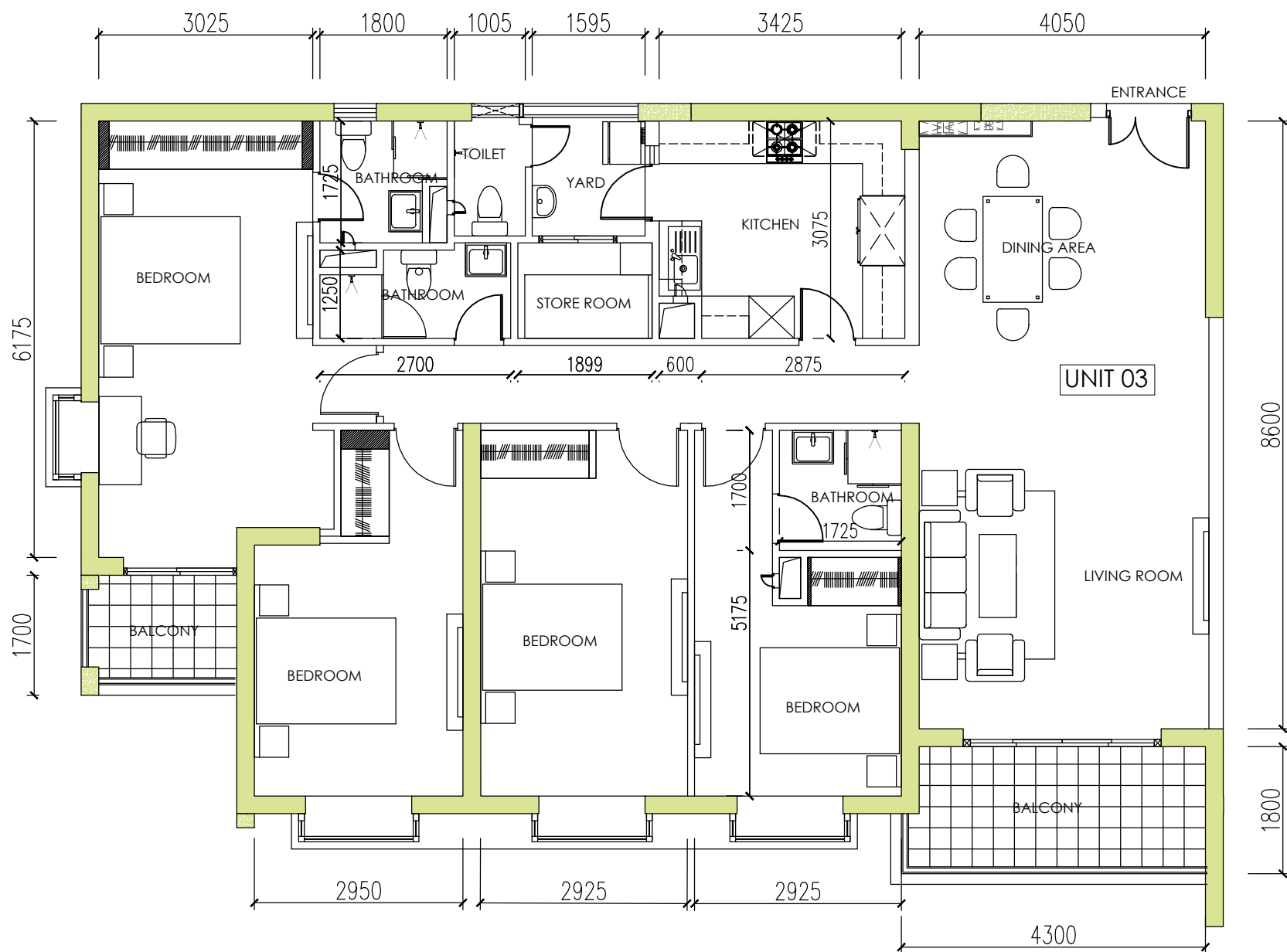
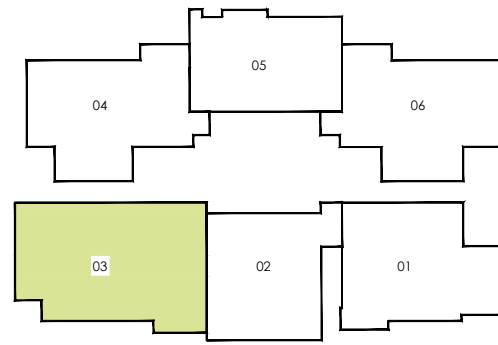
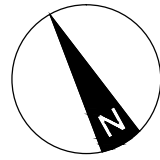


# BLOCK E - STRATFORD TOWER

## LEVEL 04 - UNIT 03

### 04 BEDROOM

AREA: 157 Sqm (1690 Sqft)



#### NOTE:

ALL PLANS ARE SUBJECT TO AMENDMENTS AS APPROVED OR REQUIRED BY THE RELEVANT AUTHORITIES, AS WELL AS CHANGES NECESSITATED BY THE CONSULTANTS/ MEP ENGINEERS DEMANDS. STATED FLOOR AREAS ARE APPROXIMATE MEASUREMENTS ONLY, SUBJECT TO FINAL SURVEY AND DOES NOT DEMARCATTE THE LEGAL BOUNDARIES OF THE APARTMENT. DEPICTION OF FURNISHINGS ARE FOR REFERENCE ONLY.